

Livestock Matter(s)

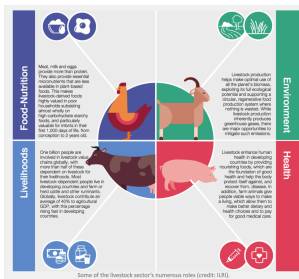
ILRI News Round-up



The January-February issue of 'Livestock Matter(s)' presents a round-up of livestock development news from ILRI and its partners.

Corporate news

Livestock's future: An opportunity not a threat



The World Economic Forum (WEF) invited ILRI to prepare a white paper on the future of livestock. Published under the auspices of the WEF's Shaping the Future of Food initiative, which focuses on how to develop inclusive, sustainable and nutritious food systems, ILRI's paper addresses

opportunities for the livestock sector to sustainably meet the growing demand for animal source foods in developing and emerging economies to 2030 and beyond.

Launching today—CGIAR Antimicrobial Resistance Hub

This morning on the Nairobi campus of the International Livestock Research Institute (ILRI), the first partners meeting of a new CGIAR Antimicrobial Resistance Hub will be opened. Scientists working at this hub aim to help reduce agriculture-associated antimicrobial resistance in low- and middle-income countries. Working in a wealth of partnerships with national governments and agencies, the hub will apply one-health approaches to managing agriculture-associated antimicrobial risks.

A world where livestock are part of the solution—Ethiopia state minister

The recent EAT-Lancet Commission report includes many valid points about livestock, but misses an opportunity to contextualize diverse food production systems outside rich, developed countries.

Six-million-dollar investment to tackle the causes of foodborne disease in Ethiopia

The UK Government's Department for International Development (DFID) and the Bill & Melinda Gates Foundation (BMGF) are supporting four new research projects to address a broad set of robust and large-scale research priorities to guide program and policy efforts to improve food safety in Ethiopia. This will be achieved through a consortium of national and

international research partners working together to support the country's ongoing efforts.

Celebrating achievements of women in livestock development at the African Women in Agricultural Research and Development (AWARD@10) event

The International Livestock Research Institute (ILRI) supports women in livestock development by ensuring that they benefit and are empowered through livestock. It does this by developing the capabilities of women to benefit from livestock production. Capabilities in this sense can range from developing capacities to access and use productivity technologies to developing aspirations for women to run livestock enterprises. This is in line with the institute's strategic objective of increasing the capacity of ILRI and its key stakeholders to make better use of livestock science and investments for better lives through livestock. To enhance the capacity of its women scientists, ILRI has benefited from the African Women in Agricultural Research and Development (AWARD) program over the past 10 years.

Project news

Assessing sustainability of smallholder dairy and traditional cattle milk production systems in Tanzania

Both in the scientific community and the media, there are a lot of talks about sustainable livestock systems, what they are and how to promote them. A sustainable farming system is one which is economically viable, socially acceptable, environmentally friendly and transferable to the future generations. But achieving sustainable smallholder milk production systems in developing countries, including Tanzania, is limited by many constraints including low cow productivity, shortage of feed, limited access to inputs and outputs markets and degradation of natural resources.

Assessing Somaliland's bone and tallow value chains role towards economic growth

Despite over two decades of civil war and instability, livestock remains the leading economic sector in Somalia where domestic and export of animal products continue. In Somaliland, an autonomous region of Somalia located in the north, there are two main types of livestock production systems, nomadic pastoral

and agro-pastoral. In the region, livestock production accounts for between 60- 65% of the country's gross domestic product (GDP), employs over 70% of the population and contributes 85% of export earnings. In 2014, a total of 3.4 million heads of livestock were exported, of which 3.1 million were sheep and goats, 0.25 million cattle and 60,000 camels.

Enhancing awareness of equity issues in the Malawian veterinary medicine sector

Capacity development is integral to successful livestock research for development that delivers outcomes and impact. Guided by its gender team, the International Livestock Research Institute (ILRI) uses research to develop livestock- and evidence-based solutions for investment by the global community in enhancing the capacities, livelihoods and roles of women and girls in their communities.

The Rural Household Multiple-Indicator Survey (RHoMIS) database hits 21K milestone

As 2018 turned into 2019, the Rural Household Multiple-Indicator Survey (RHoMIS) servers continued to spin and process data from rural households around the world. We are excited to announce that on Wednesday 9 January, the total number of households in the RHoMIS database passed the 20,000 milestone.

ILRI in the media

London international development centre and London school of hygiene & tropical medicine launch international research hub to tackle child stunting

Up to one million children could benefit from a new £19.76m research hub led by the London International Development Centre (LIDC) and the London School of Hygiene & Tropical Medicine (LSHTM) that aims to further our understanding of the causes of stunting.

Campaign to eradicate deadly livestock disease

The government has launched a Sh200 million plan to eradicate a highly contagious and deadly disease affecting goats and sheep.

Peste des petits ruminants (PPR), a viral disease, affects both domestic and wild small ruminants and is endemic in Isiolo, Samburu, Laikipia, Baringo, Turkana, Mandera, Garissa, Wajir, Marsabit, Lamu, Tana River, West Pokot, Meru and Tharaka Nithi.

First ever global scientific eating plan forgets the world's poor

A team of 37 world-leading scientists from 16 countries have just released the world's first ever scientific eating plan. The "planetary health diet" is designed to be healthier for people and more environmentally friendly.

Staff updates

In January and February we welcomed the following staff:

- Regina Njeru, research assistant
- Nehemiah Kimengich, Kapiti Ranch manager
- Metasebia Tolossa, facilities supervisor
- Binyam Abebe, technical assistant
- Antoinette Miyunga, research assistant
- Evelyne Kavila, finance and administrative assistant

We said goodbye to:

- Cecilia Muriuki, research associate
- Joseph Njuguna, animal technician
- Ahmed Maalim, driver
- Dedan Githae, bioinformatician
- Dorothy Onyango, research associate
- Stephen Dean, head of ICT
- Grace Miano, monitoring and evaluation specialist
- Peter Emmrich, postdoctoral fellow
- Catherine Pfeifer, scientist
- Joanne Mahinda, ICT customer services technician
- Birhanu Lenjiso, postdoctoral fellow
- Andrew Mude, principal scientist, economist
- Henry Kimuli, engineering technician
- Masresha Taye, research officer
- Evans Nyabuto, electronics engineering supervisor
- Samuel Taddese, ICT infrastructure officer
- Albin Hübscher, director, Corporate Services
- Abule Ebro, research coordinator

Read this roundup online:
clippings.ilri.org/tag/round

Patron: Professor Peter C. Doherty AC, FAA, FRS

Animal scientist, Nobel Prize Laureate for Physiology or Medicine—1996

Box 30709, Nairobi 00100 Kenya
Phone +254 20 422 3000
Fax +254 20 422 3001
Email ilri-kenya@cgiar.org

ilri.org
better lives through livestock

ILRI is a CGIAR research centre

Box 5689, Addis Ababa, Ethiopia
Phone +251 11 617 2000
Fax +251 11 667 6923
Email ilri-ethiopia@cgiar.org

ILRI has offices in East Africa • South Asia • Southeast and East Asia • Southern Africa • West Africa

